



PATHUMWAN  
PRINCESS  
HOTEL

# MICE

| C O N N E C T I O N S |



[www.pprincess.com](http://www.pprincess.com)





## THE CONNECTED HOTEL

Pathumwan Princess thrives at one of the best and most convenient locations in vibrant, cosmopolitan Bangkok; connected to the renowned MBK Shopping Center, a **“skywalk”** away from Siam, the city’s biggest shopping complex, and just minutes away from the iconic **“skytrain”** that whisks visitors to all Bangkok’s many attractions in air-conditioned comfort.

## MICE SUITABILITY

The hotel offers numerous indoor facilities with daylight foyer and skyline views, as well as attractive large outdoor MICE venues on the 8<sup>th</sup> Floor.

Personalized meeting packages highlight extensive culinary offerings including Italian, Korean, Thai & International menus prepared by talented resident chefs. Pathumwan-branded daytime & evening options offer high quality coffee breaks, lunch, dinner and cocktail parties.



# M

## | FLOOR |

### JAMJUREE ROOMS

Jamjuree consists of four rooms and an elegant foyer with eye-catching views across Bangkok's iconic skyline. Each room offers modern sound systems and facilities, and flexible dimensions that can be set up to meet your exact requirements.

#### Jamjuree Ballroom A and B

Two rooms, each with a capacity for 120 guests, or combined, up to 300 guests, the perfect venues for both formal and informal occasions.

#### Jamjuree 1 and 2

Two rooms, that individually have a capacity of up to 100 guests and when combined can accommodate up to 150 guests.



### M Floor

Meeting Room	Dimensions (m) (W. x L. x H.)	Sq.m	Banquet / Event		U-shape (Pax)	Classroom (Pax)	Theater (Pax)
			Banquet (Pax)	Cocktail (Pax)			
Jamjuree1	9 x 10.7 x 3.5	96.3	50	80	25	50	120
Jamjuree 1+Foyer	9 x 16.1 x 3.5	144	80	100	35	80	150
Jamjuree 2	9 x 10.7 x 3.5	96.3	50	80	25	50	120
Jamjuree 1+2+Foyer	18 x 16.1 x 3.5	289.8	120	150	n/a	100	200
Jamjuree Ballroom A	9 x 17.7 x 3.5	159.3	90	150	45	100	150
Jamjuree Ballroom B	9 x 17.7 x 3.5	159.3	90	150	45	100	150
Jamjuree Ballroom A+B	18 x 17.7 x 3.5	318.6	200	300	n/a	180	300
Foyer	27 x 10.7 x 3.5	288.9	250	300	n/a	n/a	n/a





Foyer



U - shape



Classroom



Theater

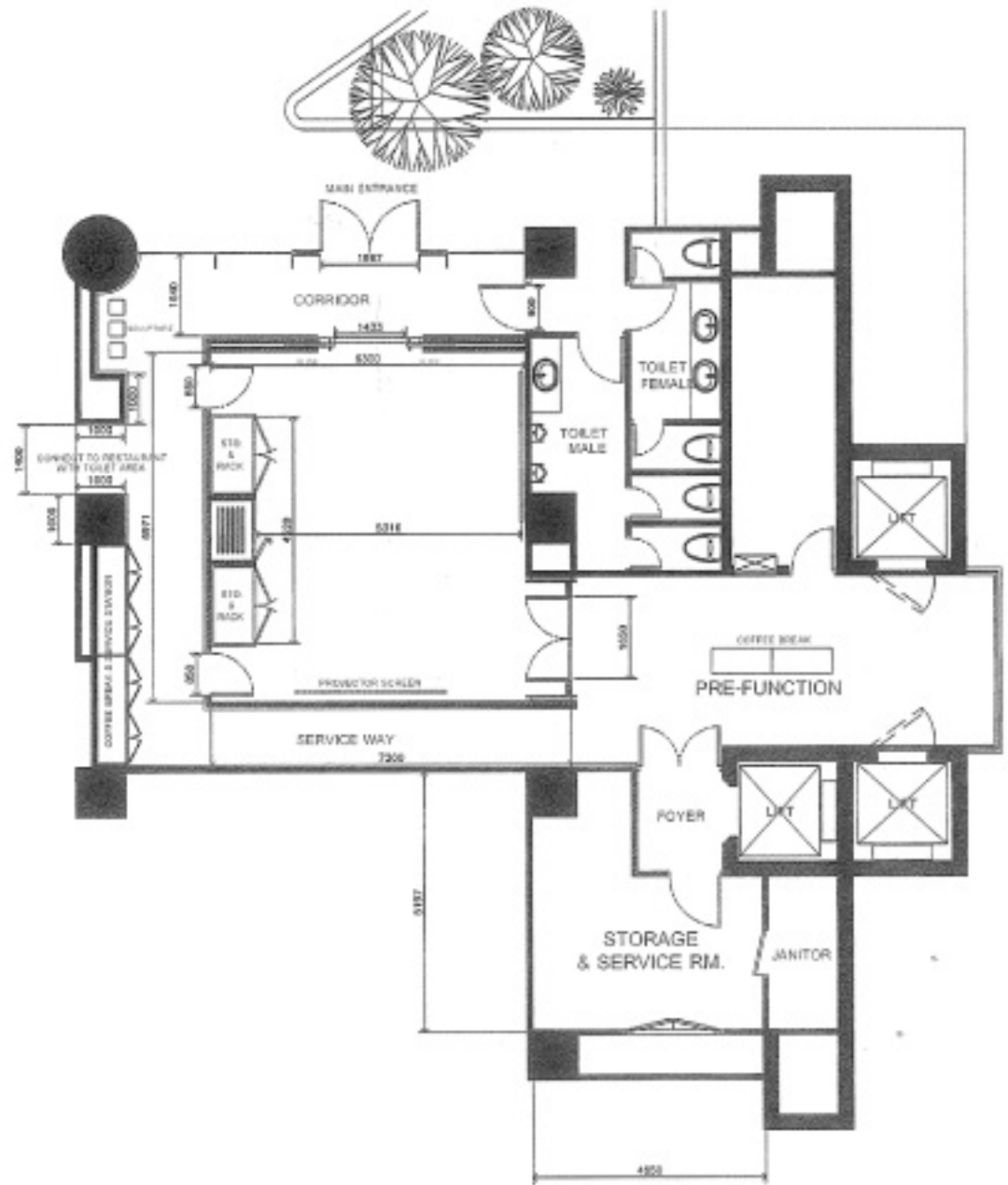


# 8<sup>th</sup>

## | FLOOR |

### PISA ROOM

Pisa Room is the ideal setting for every kind of intimate event from board meetings or private theatre shows to stylish cocktail receptions. The Italian-themed room can be divided into two smaller rooms and arranged in a variety of comfortable styles, with seating from 10 up to 40, depending on the occasion.



### 8<sup>th</sup> Floor

Meeting Room	Dimensions (m) (W. x L. x H.)	Sq.m	Banquet / Event		U-shape (Pax)	Classroom (Pax)	Theater (Pax)
			Banquet (Pax)	Cocktail (Pax)			
Pisa Room 1	5.2 x 3.4 x 2.7	17.68	10	15	8	10	20
Pisa Room 2	5.2 x 3.2 x 2.7	16.64	10	15	8	10	20
Pisa Room 1+2	5.2 x 6.6 x 2.7	34.32	20	30	16	18	40



Boardroom



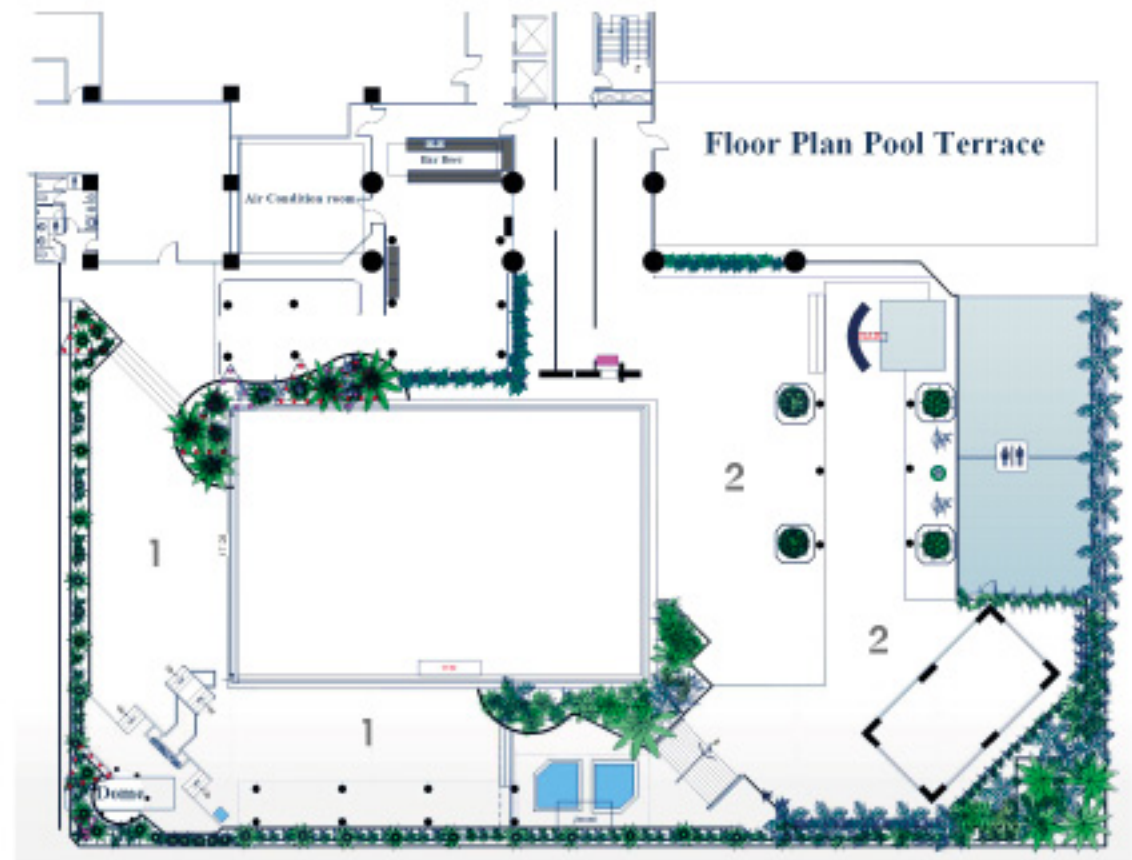
# OUTDOOR

## | SPACES |

Offering glittering Bangkok views, our 8<sup>th</sup> Floor outdoor locations are ideal for weddings, parties, receptions and other evening events.

### POOLSIDE

The salt-chlorinated waters of Bangkok's biggest hotel swimming pool form a backdrop to stunning 8<sup>th</sup> Floor views over Bangkok, and friendly, helpful staff will ensure a truly memorable occasion.



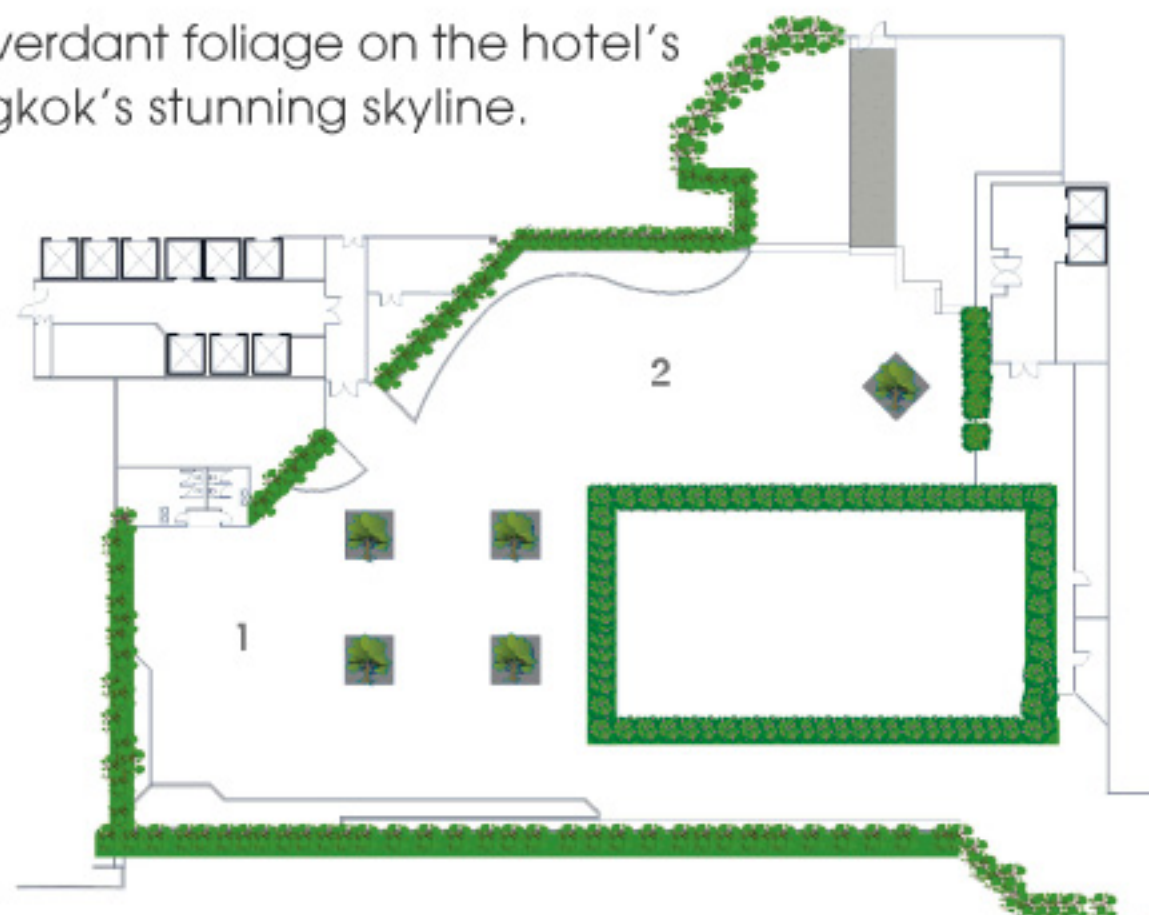
### POOL TERRACE

Area	Sq.m	Banquet (Pax)	Cocktail (Pax)
Pool Terrace Zone 1	360	80	100
Pool Terrace Zone 2	516	250	300
Vista Terrace 1	450	100	150
Vista Terrace 2	363	150	200
Entire Vista Terrace	813	250	350



### VISTA TERRACE

A private garden area surrounded by verdant foliage on the hotel's 8<sup>th</sup> Floor, offering classic views of Bangkok's stunning skyline.



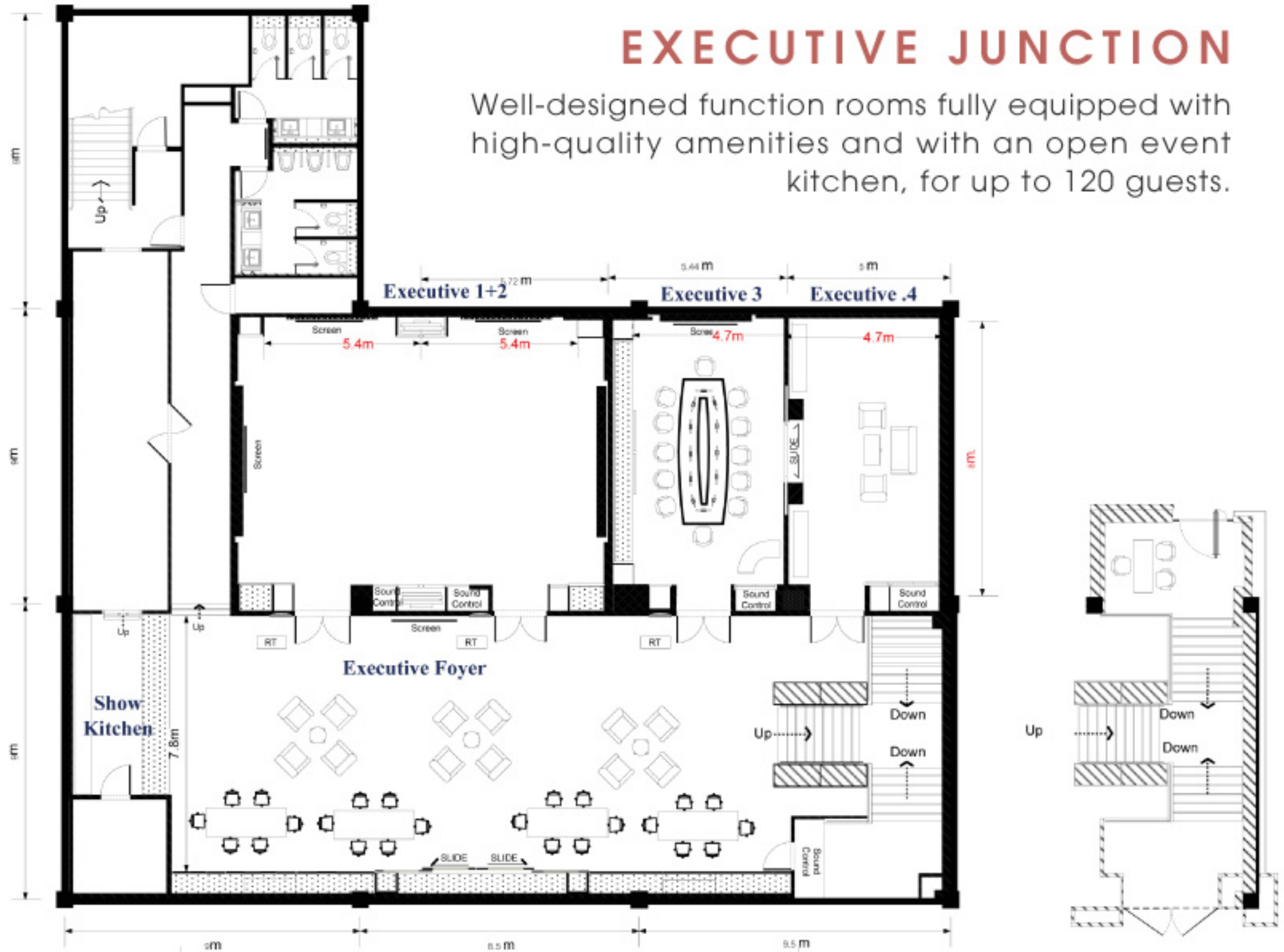


# BELOW

## | LOBBY |

### EXECUTIVE JUNCTION

Well-designed function rooms fully equipped with high-quality amenities and with an open event kitchen, for up to 120 guests.



### Below-Lobby

Meeting Room	Dimensions (m) (W. x L. x H.)	Sq.m	Banquet / Event		U-shape (Pax)	Classroom (Pax)	Theater (Pax)
			Banquet (Pax)	Cocktail (Pax)			
Executive 1	5.4 x 8 x 3.1	43.2	20	30	18	21	40
Executive 2	5.4 x 8 x 3.1	43.2	20	30	18	21	40
Executive 1+2	10.8 x 8 x 3.1	86.4	50	80	30	50	80
Executive 3+4	4.7 x 8 x 3.1	37.6	n/a	n/a	14	n/a	n/a
Executive Foyer	8 x 18 x 3.4	144	80	120	n/a	n/a	n/a





C l a s s r o o m



B o a r d r o o m

## FOYER

Expansive foyer area, perfect for coffee breaks, receptions and evening cocktail parties.





## COFFEE BREAKS

We offer flexible, high quality coffee breaks that include:

- A large array of sweets & savory selections for both morning and afternoon breaks, freshly prepared by our talented in-house bakery.
- Live stations that can be tailored specifically to your preference.
- Freshly brewed coffee, classic and herbal tea selections, and freshly squeezed juices.



M Floor



8<sup>th</sup> Floor



Below - Lobby



## LUNCH BUFFETS

**Meeting packages include a number of lunch options:** International buffets at CiTi BiSTRo, featuring Thai and Western dishes, carving station, sashimi and more. *(Minimum 30 guests).*



An Italian buffet at our 8<sup>th</sup> Floor Terrazza Restaurant for up to 60 people featuring authentic Italian classics including antipasti, pizza and pasta dishes.

## BUSINESS LUNCH SETS

For smaller groups we offer a more intimate experience with business lunch sets available in Kongju Korean Restaurant, Terrazza Italian Restaurant and CiTi BiSTRo.





# EVENING

| DINNER & PARTY |



## COCKTAILS

For evening events we offer a range of amazing beverage packages including live cocktail stations, if required.

In addition, a butler-style service with an hors d'oeuvres and canapé selection can be provided, customized to your preferences.



## DINNER

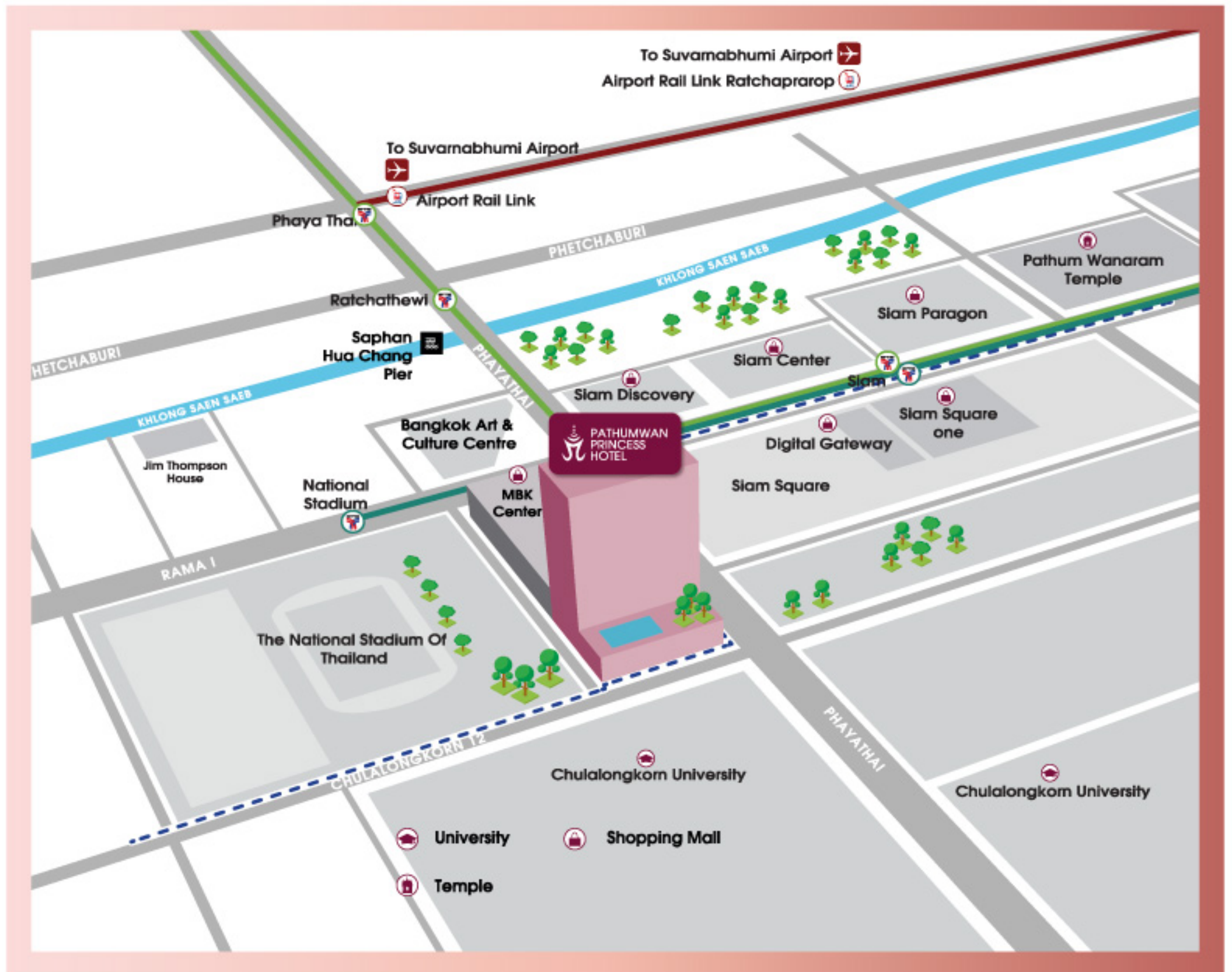
Dinner can be tailored to your wishes, with options including full international and Thai menus and Italian buffet. Dinner sets or family style Chinese dining experiences are available in our numerous restaurants, ballrooms or outside space locations.



## PARTY

We are happy to create your perfect party package in one of our ballrooms, outside areas or entire restaurants booked privately for you.





### Pathumwan Princess Hotel

444 MBK Center, Phayathai Road, Wangmai, Pathumwan, Bangkok 10330  
 T: +66 (0) 2216 3700, F: +66 (0) 2216 3730, ppb@pprincess.com, www.pprincess.com

**Managed by MBK Hotel & Tourism Co., Ltd.**

Follow us on:  PathumwanPrincessHotel  @PPrincess  PPrincessHotel